

Plate 1 – The plan of Doclea edited by Piero Sticotti in 1913.

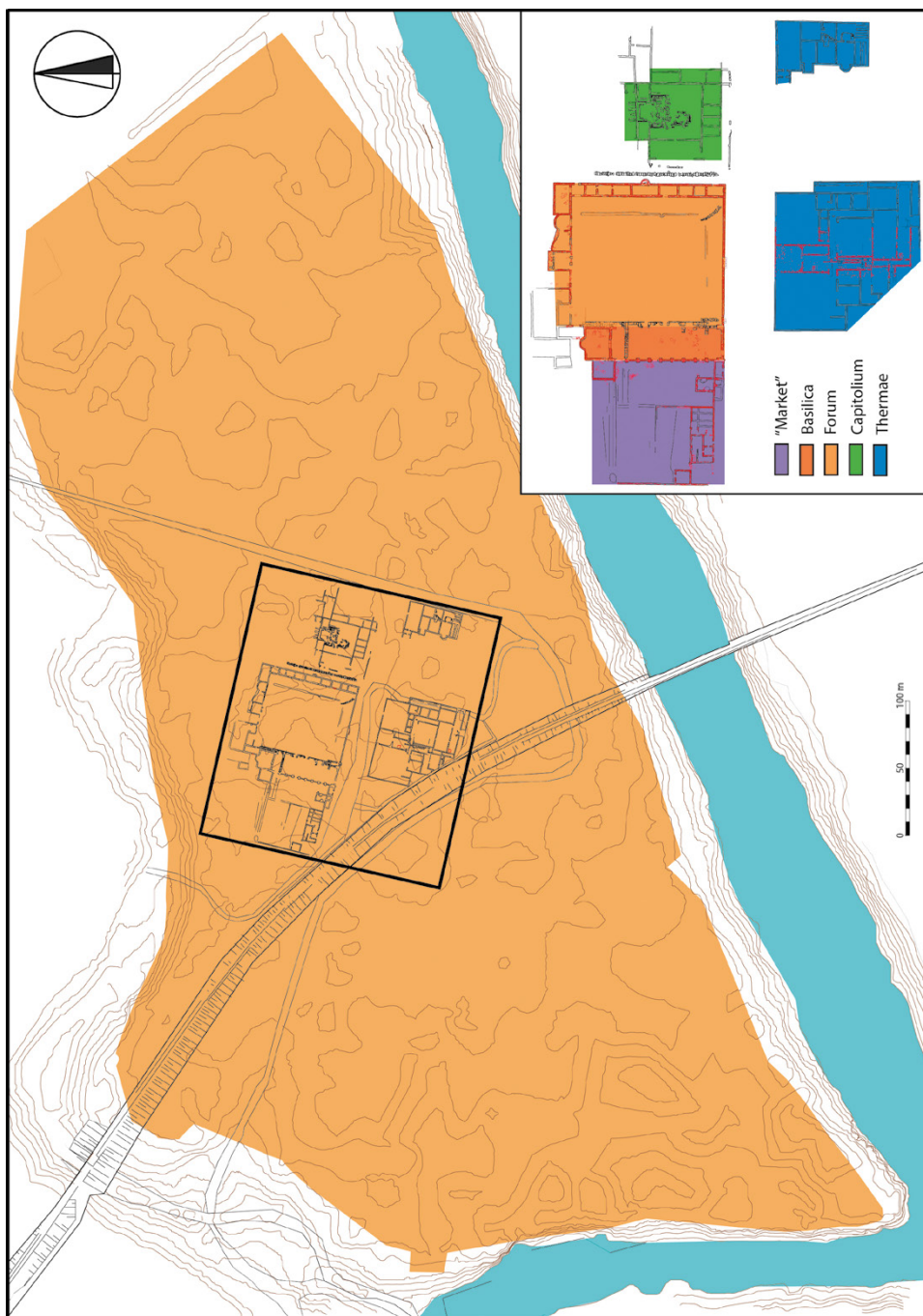


Plate 2 – Preliminary plan of Doclea, after the 2017 campaign, showing the Roman remains and the railroad layout, as verified on site through the integration of various methodologies and sets of data collected. This information comprises archival and cadastre maps, satellite and drone orthophotos, GPS surveying and total station measurements.

Plate 3 – Satellite image of the Doclea urban area: results of the geophysical prospection in red, of the archaeological survey in green, and of the GPS data (architectonical elements and road patterns) in cyan; the blue lines show the hypothetical reconstruction of the urban settlement; ditches and aqueduct on the eastern side (lines in white) are based on STICOTTI 1913 (see Plate 1) (modified from ©2018 Google Image and ©2018 DigitalGlobe).







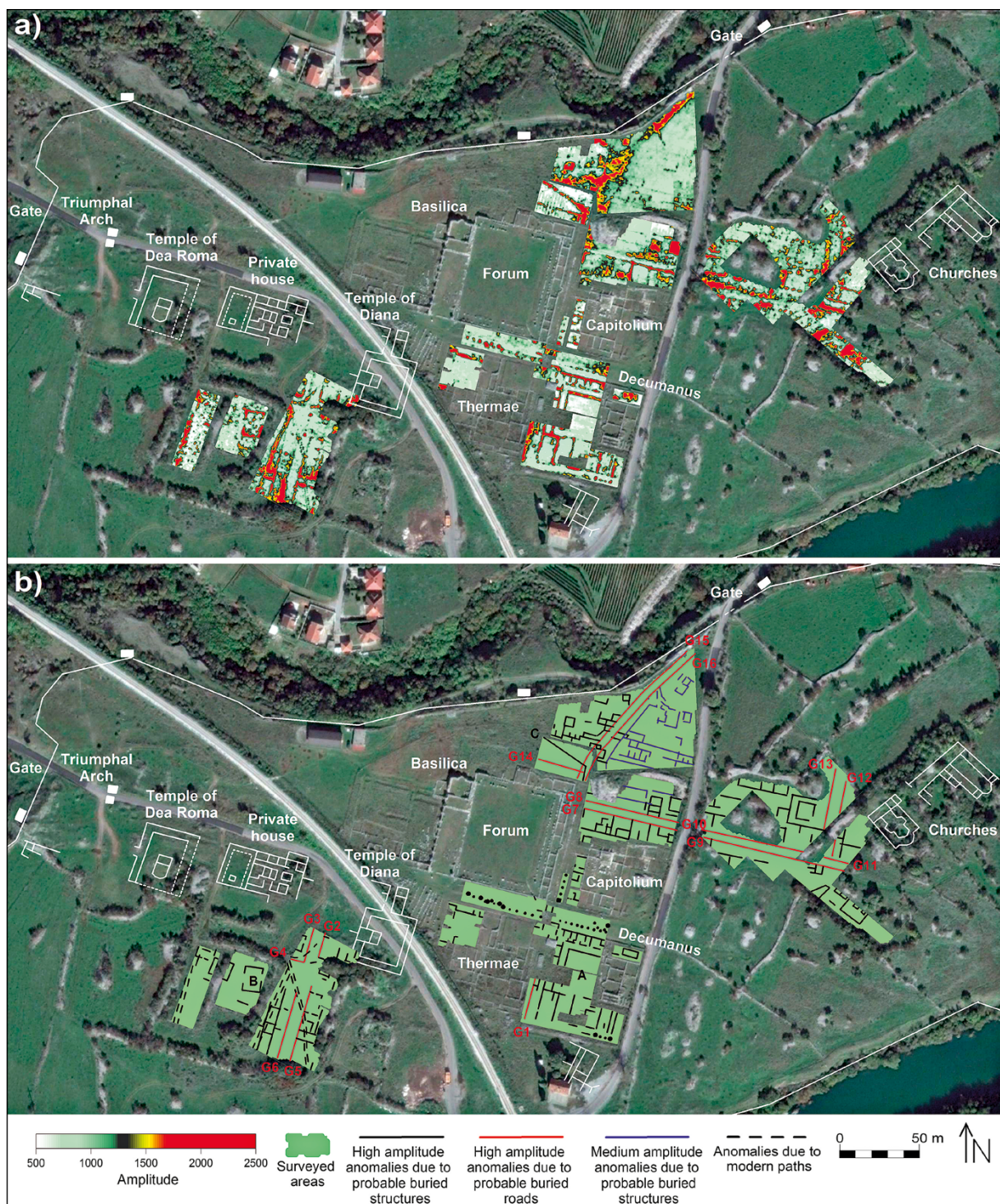


Plate 4 – GPR results: time slice relative to the time window 14-18 ns (about 0,7-1,4 m in depth), overlapped on the satellite image of Google Earth™ (a) and identification of anomalies (b).







